

BT-NG-020621-545-0012

Bramford to Twinstead Reinforcement

Volume 2: Plans and Drawings

Document 2.9: Trees and Hedgerows to be Removed or Managed Plans

Final Issue A
April 2023

Planning Inspectorate reference: EN020002

Infrastructure Planning (Applications: Prescribed Forms and Procedure) Regulations 2009 Regulation 5(2)(o)

nationalgrid

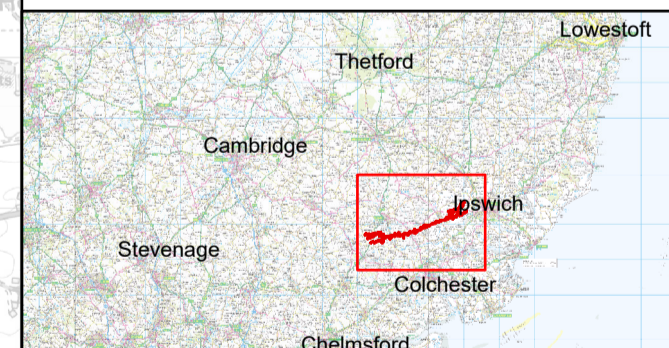
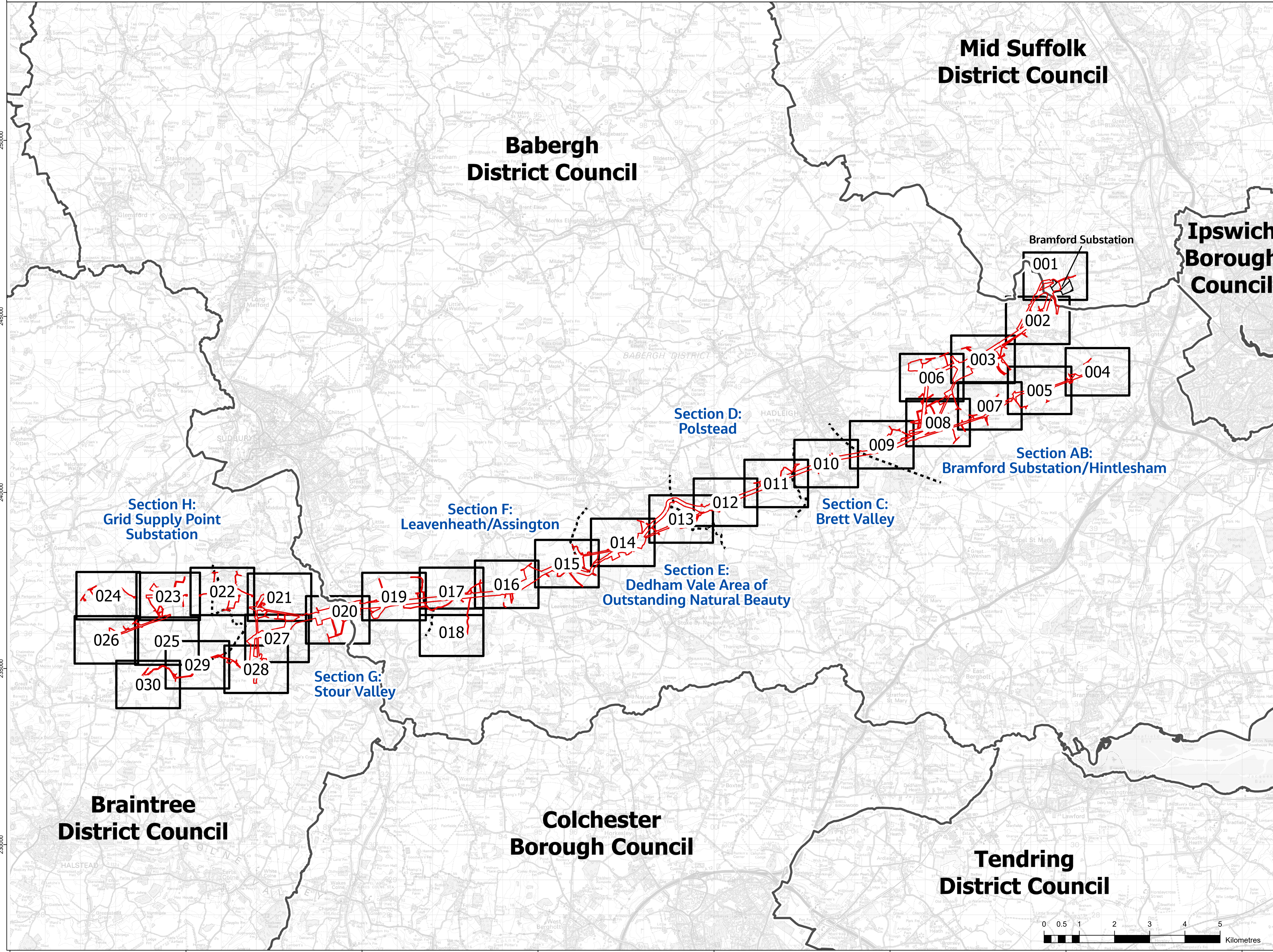


Page intentionally blank



Legend

- Order limits
- Section boundaries
- Local authority boundaries
- Existing substation



Reference should be made to Document 2.1 Guide to the Plans which provides further information on what the plans show.

NG Investment No. 21847				

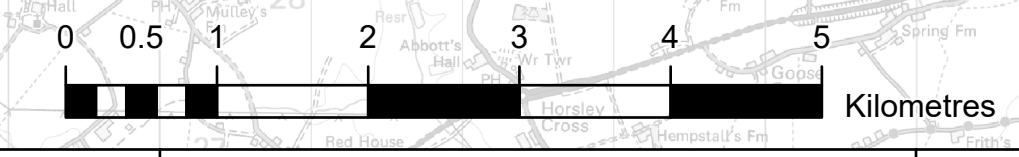
PROJECT: Bramford to Twinstead Reinforcement

nationalgrid

TITLE: Document 2.9
Trees and Hedgerows to be Removed or Managed Plans

CIRCUIT / SITE: Bramford – Pelham & Bramford – Braintree – Bulls Lodge GIS

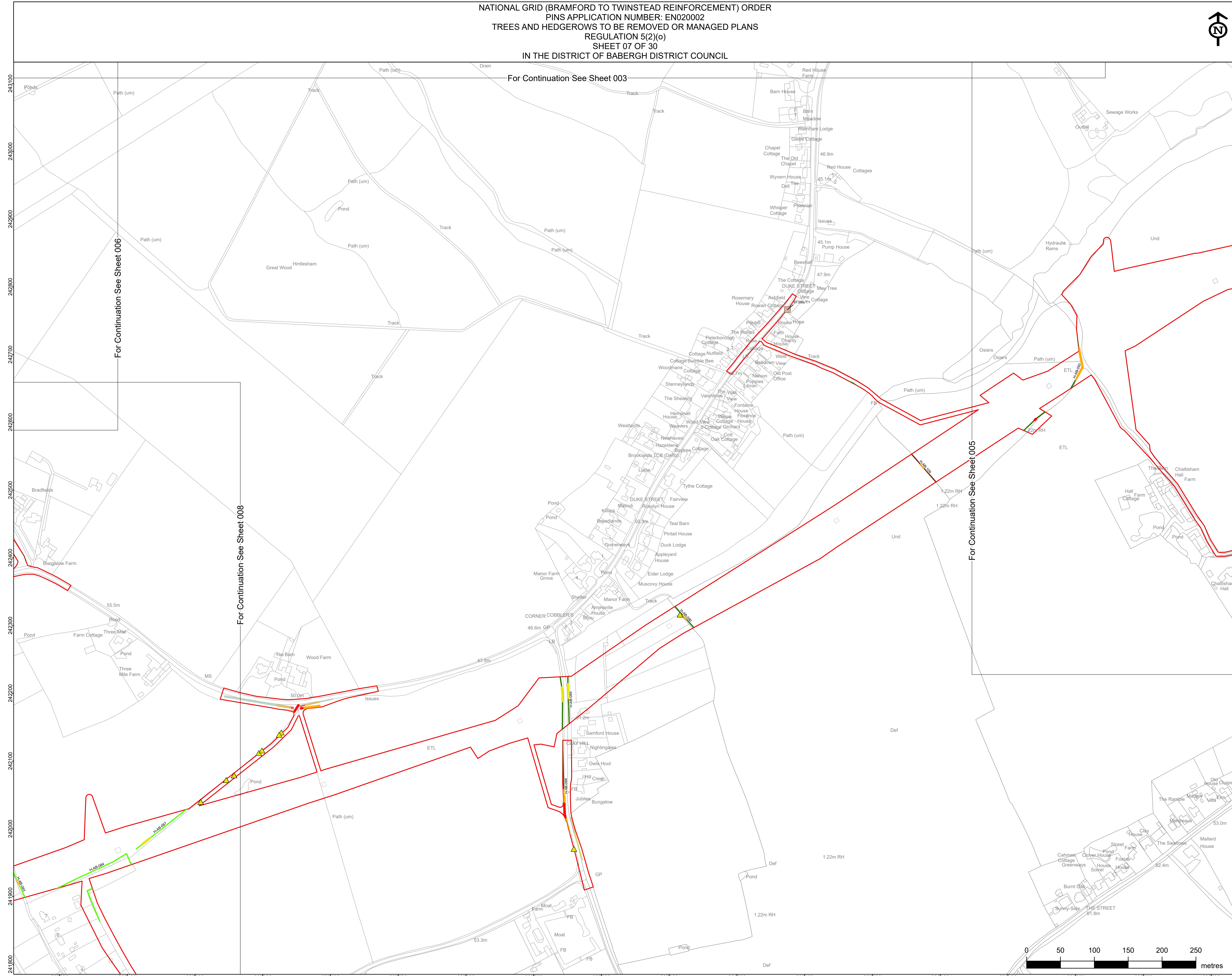
ORIGINATOR DRAWING NO. A1_AAA_BTT_2.9_KP_Rev01 A1



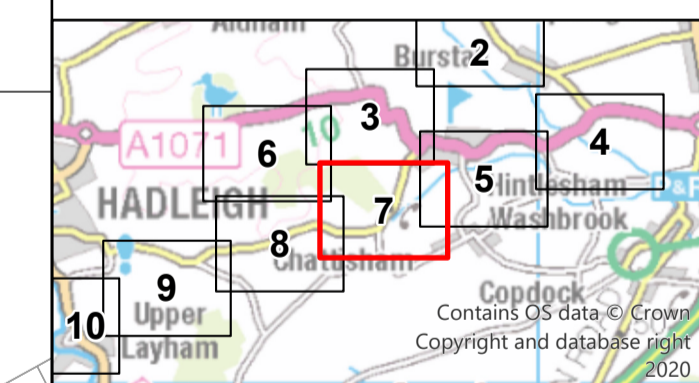
NATIONAL GRID (BRAMFORD TO TWINSTEAD REINFORCEMENT) ORDER
 PINS APPLICATION NUMBER: EN020002
 TREES AND HEDGEROWS TO BE REMOVED OR MANAGED PLANS
 REGULATION 5(2)(e)
 SHEET 07 OF 30
 IN THE DISTRICT OF BABERGH DISTRICT COUNCIL



Reproduced from Ordnance Survey maps by permission of Ordnance Survey on behalf of the controller of His Majesty's Stationary Office. © Crown Copyright Ordnance Survey, Licence no. 0100059731



- Order Limits
- Section boundaries
- Retained Vegetation**
- Veteran Tree
- Individual Tree Preservation Order
- Tree Preservation Order
- ▲ Tree
- Important hedgerow as per criteria in Hedgerow Regulations 1997
- Not important hedgerow as per criteria in Hedgerow Regulations 1997
- Line of trees
- Commercial orchards
- Potential ancient woodland
- Ancient woodland
- Retained woodland / group of trees
- Affected Vegetation**
- ▲ Tree pruning
- ▲ Tree coppicing
- ▲ Tree removal (including roots)
- Hedgerow / line of trees pruning
- Hedgerow / line of trees to be coppiced
- Hedgerow / line of trees removal (including roots)
- Woodland / group of trees to be pruned
- Woodland / group of trees to be coppiced
- Woodland / group of trees to be removed (including roots)
- Hedgerow / line of trees crossing schedule label



Reference should be made to Document 2.1 Guide to the Plans which provides further information on what the plans show.

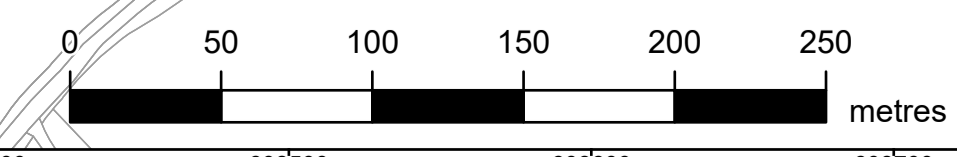
NG Investment No: 21847				
A	17/02/2023	Rev A for DCO application	JT	DD
ISSUE	DATE	REMARKS	DRAWN	CHKD

PROJECT: **Bramford to Twinstead Reinforcement**

nationalgrid

TITLE: Document 2.9
 Trees and Hedgerows to be Removed or Managed Plans

CIRCUIT / SITE: Bramford – Pelham & Bramford – Baintree – Bulls Lodge	GIS
ORIGINATOR DRAWING NO. A1_Df4_2.9_TreeAndHedgerowRemoval	A1
NG DRAWING No. BT-NG-020621-545-0012	SHEET NO. 07
SCALE: 1:2,500	NO. OF SHEETS 30
	ISSUE: A

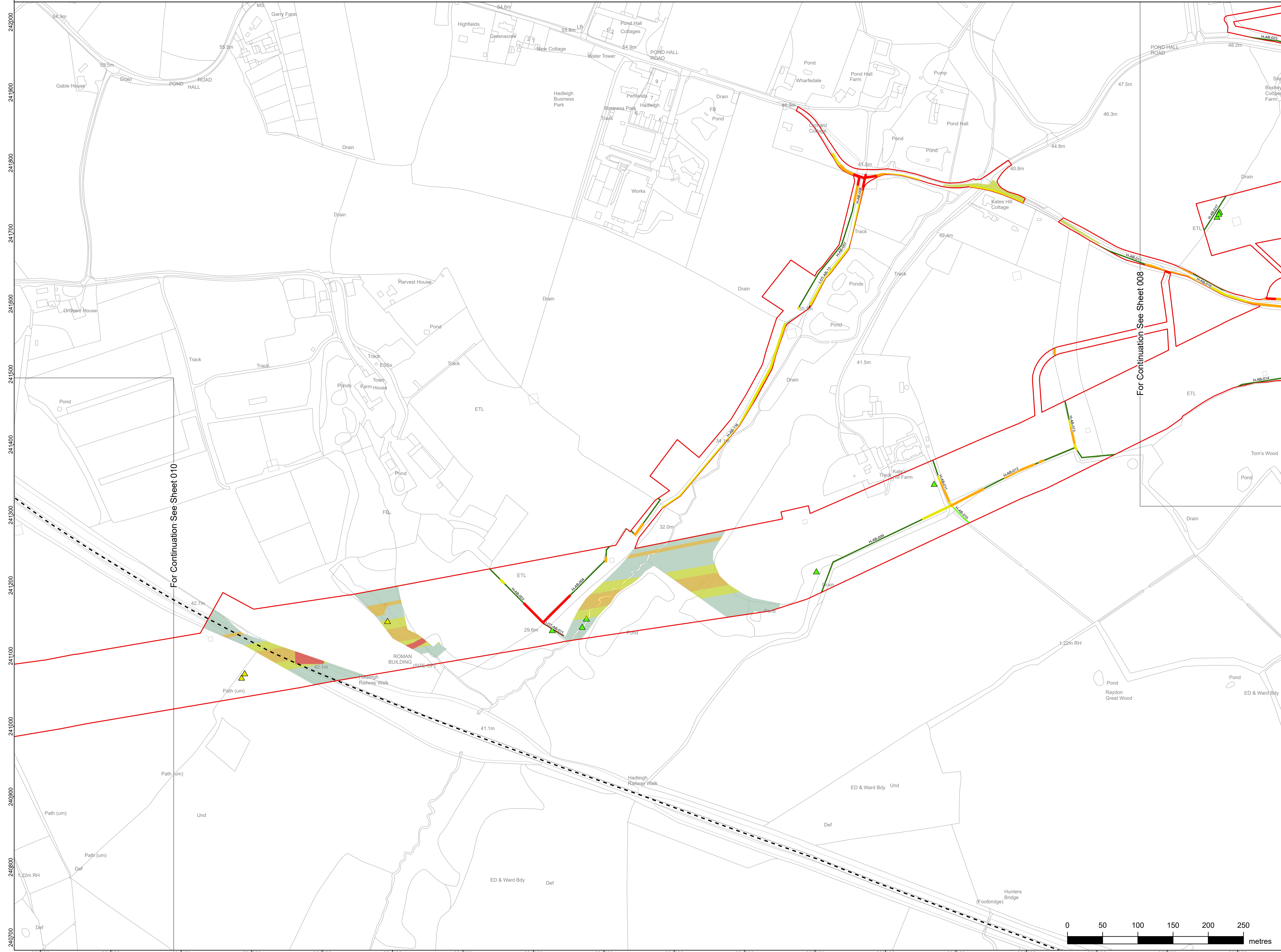


NATIONAL GRID (BRAMFORD TO TWINSTEAD REINFORCEMENT) ORDER
 PINS APPLICATION NUMBER: EN020002
 TREES AND HEDGEROWS TO BE REMOVED OR MANAGED PLANS
 REGULATION 5(2)(e)
 SHEET 09 OF 30
 IN THE DISTRICT OF BABERGH DISTRICT COUNCIL



Application Document 2.9

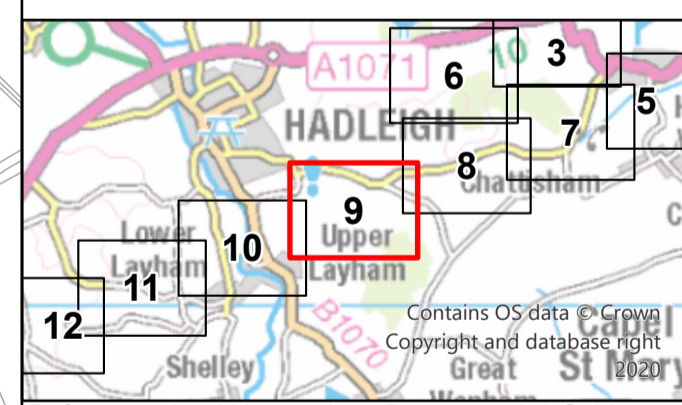
Reproduced from Ordnance Survey maps by permission of Ordnance Survey on behalf of the controller of His Majesty's Stationery Office. © Crown Copyright Ordnance Survey, Licence no. 010059731



- Order Limits
- Section boundaries
- Retained Vegetation**
- Veteran Tree
- Individual Tree Preservation Order
- Tree Preservation Order
- ▲ Tree
- Important hedgerow as per criteria in Hedgerow Regulations 1997
- Not important hedgerow as per criteria in Hedgerow Regulations 1997
- Line of trees
- Commercial orchards
- Potential ancient woodland
- Ancient woodland
- Retained woodland / group of trees
- Affected Vegetation**
- ▲ Tree pruning
- ▲ Tree coppicing
- ▲ Tree removal (including roots)
- Hedgerow / line of trees pruning
- Hedgerow / line of trees to be coppiced
- Hedgerow / line of trees removal (including roots)
- Woodland / group of trees to be pruned
- Woodland / group of trees to be coppiced
- Woodland / group of trees to be removed (including roots)
- Hedgerow / line of trees crossing schedule label

For Continuation See Sheet 010

For Continuation See Sheet 008



Reference should be made to Document 2.1 Guide to the Plans which provides further information on what the plans show.

NG Investment No: 21847			
A	17/02/2023	Rev A for DCO application	JT DD CW
ISSUE	DATE	REMARKS	DRAWN/CHKD/APPD

PROJECT: **Bramford to Twinstead Reinforcement**

nationalgrid

TITLE: Document 2.9
 Trees and Hedgerows to be Removed or Managed Plans

CIRCUIT / SITE: **Bramford – Pelham & Bramford – Braitree – Bulls Lodge**

ORIGINATOR DRAWING NO. A1_D4_2.9_TreeAndHedgerowRemoval		GIS
NG DRAWING No. BT-NG-020621-545-0012	SHEET NO. 09	NO. OF SHEETS 30
SCALE: 1:2,500		A

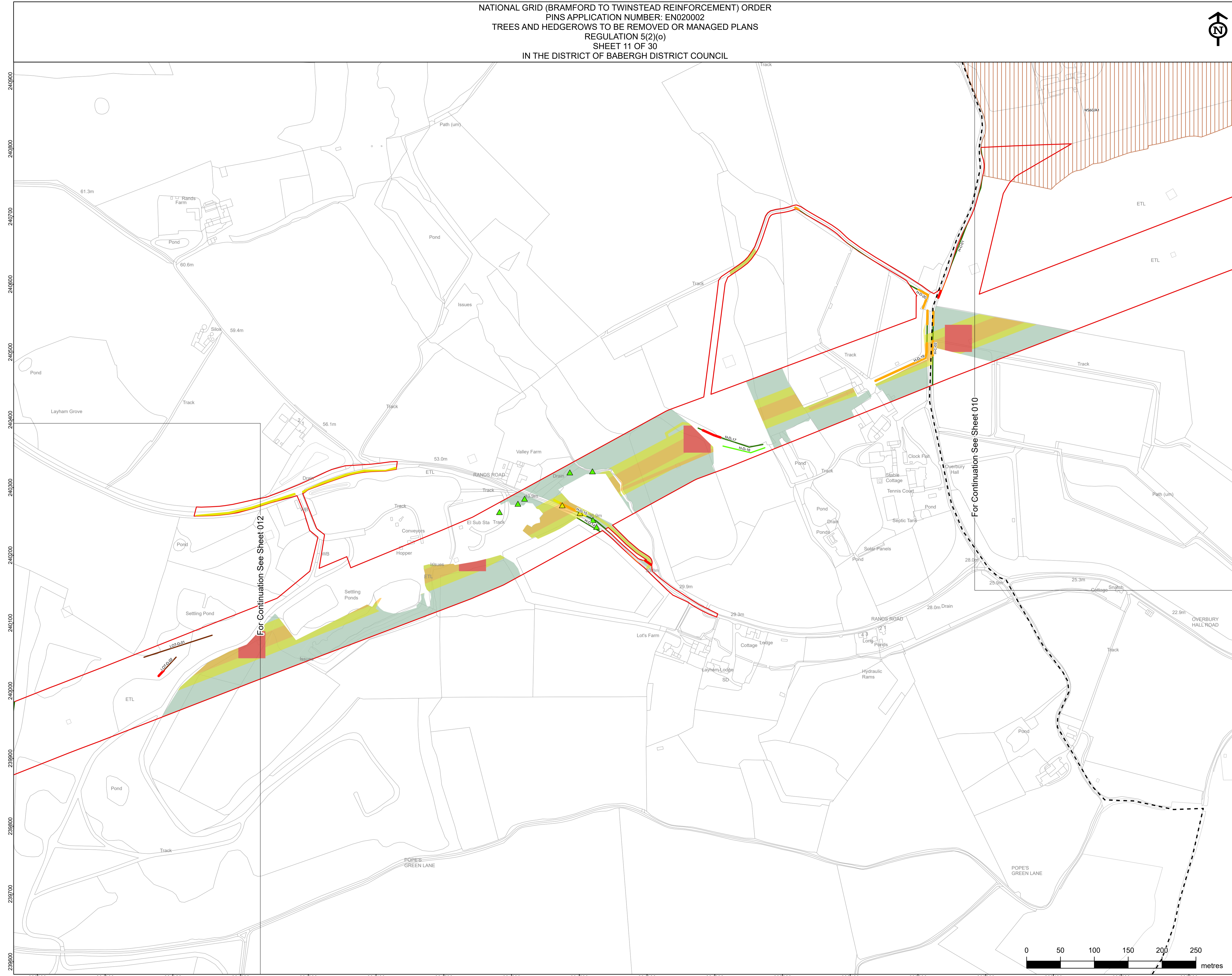


NATIONAL GRID (BRAMFORD TO TWINSTEAD REINFORCEMENT) ORDER
 PINS APPLICATION NUMBER: EN020002
 TREES AND HEDGEROWS TO BE REMOVED OR MANAGED PLANS
 REGULATION 5(2)(e)
 SHEET 11 OF 30
 IN THE DISTRICT OF BABERGH DISTRICT COUNCIL



Application Document 2.9

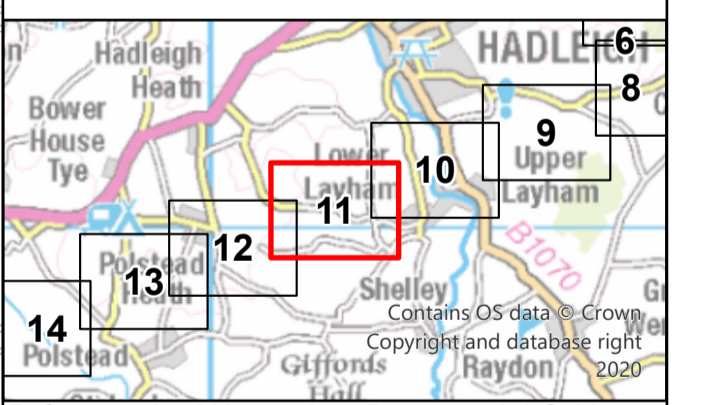
Reproduced from Ordnance Survey maps by permission of Ordnance Survey on behalf of the controller of His Majesty's Stationery Office. © Crown Copyright Ordnance Survey, Licence no. 0100059731



- Order Limits
- Section boundaries
- Retained Vegetation**
- Veteran Tree
- Individual Tree Preservation Order
- Tree Preservation Order
- ▲ Tree
- Important hedgerow as per criteria in Hedgerow Regulations 1997
- Not important hedgerow as per criteria in Hedgerow Regulations 1997
- Line of trees
- Commercial orchards
- Potential ancient woodland
- Ancient woodland
- Retained woodland / group of trees
- Affected Vegetation**
- ▲ Tree pruning
- ▲ Tree coppicing
- ▲ Tree removal (including roots)
- Hedgerow / line of trees pruning
- Hedgerow / line of trees to be coppiced
- Hedgerow / line of trees removal (including roots)
- Woodland / group of trees to be pruned
- Woodland / group of trees to be coppiced
- Woodland / group of trees to be removed (including roots)
- Hedgerow / line of trees crossing schedule label

For Continuation See Sheet 012

For Continuation See Sheet 010

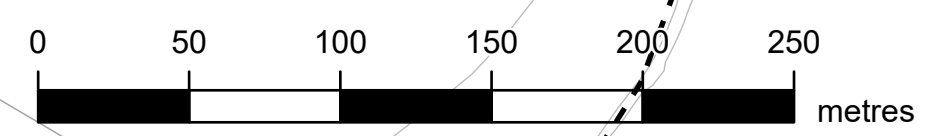


Reference should be made to Document 2.1 Guide to the Plans which provides further information on what the plans show.

NG Investment No: 21847				
A	17/02/2023	Rev A for DCO application	JT	DD
ISSUE	DATE	REMARKS	DRAWN	CHKD

PROJECT: **Bramford to Twinstead Reinforcement**

nationalgrid	
TITLE: Document 2.9 Trees and Hedgerows to be Removed or Managed Plans	
CIRCUIT / SITE: Bramford – Pelham & Bramford – Braitree – Bulls Lodge	GIS
ORIGINATOR DRAWING NO. A1_DF4_2.9_TreeAndHedgerowRemoval	A1
NG DRAWING No. BT-NG-020621-545-0012	SHEET NO. 11
SCALE: 1:2,500	NO. OF SHEETS 30
ISSUE: A	

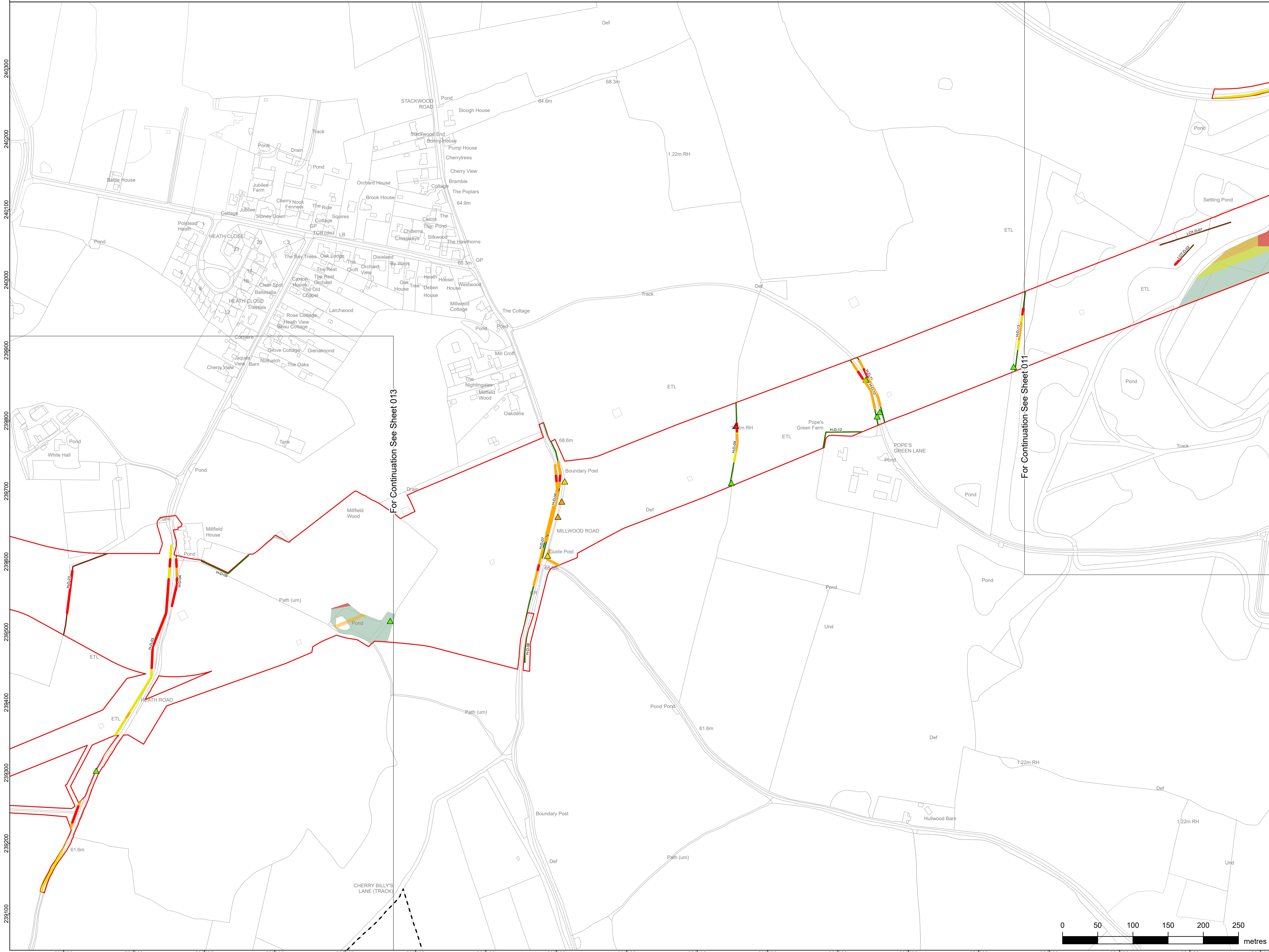


NATIONAL GRID (BRAMFORD TO TWINSTEAD REINFORCEMENT) ORDER
 PINS APPLICATION NUMBER: EN020002
 TREES AND HEDGEROWS TO BE REMOVED OR MANAGED PLANS
 REGULATION 5(2)(c)
 SHEET 12 OF 30
 IN THE DISTRICT OF BABERGH DISTRICT COUNCIL



Application Document 2.9

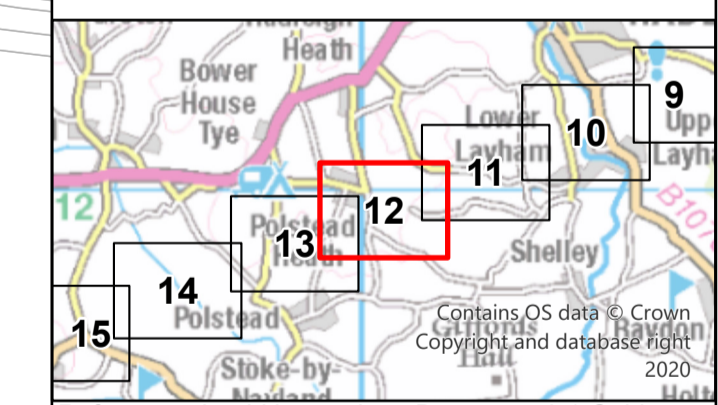
Reproduced from Ordnance Survey maps by permission of Ordnance Survey on behalf of the controller of His Majesty's Stationery Office. © Crown Copyright Ordnance Survey, Licence no. 0100059731



- Order Limits
- Section boundaries
- Retained Vegetation**
- Veteran Tree
- Individual Tree Preservation Order
- Tree Preservation Order
- ▲ Tree
- Important hedgerow as per criteria in Hedgerow Regulations 1997
- Not important hedgerow as per criteria in Hedgerow Regulations 1997
- Line of trees
- Commercial orchards
- Potential ancient woodland
- Ancient woodland
- Retained woodland / group of trees
- Affected Vegetation**
- ▲ Tree pruning
- ▲ Tree coppicing
- ▲ Tree removal (including roots)
- Hedgerow / line of trees pruning
- Hedgerow / line of trees to be coppiced
- Hedgerow / line of trees removal (including roots)
- Woodland / group of trees to be pruned
- Woodland / group of trees to be coppiced
- Woodland / group of trees to be removed (including roots)
- Hedgerow / line of trees crossing schedule label

For Continuation See Sheet 013

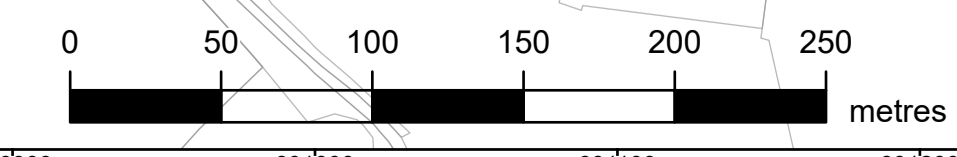
For Continuation See Sheet 011



Reference should be made to Document 2.1 Guide to the Plans which provides further information on what the plans show.

NG Investment No: 21847				
A	17/02/2023	Rev A for DCO application	JT	DD
ISSUE	DATE	REMARKS	DRAWN	CHKD
PROJECT: Bramford to Twinstead Reinforcement				

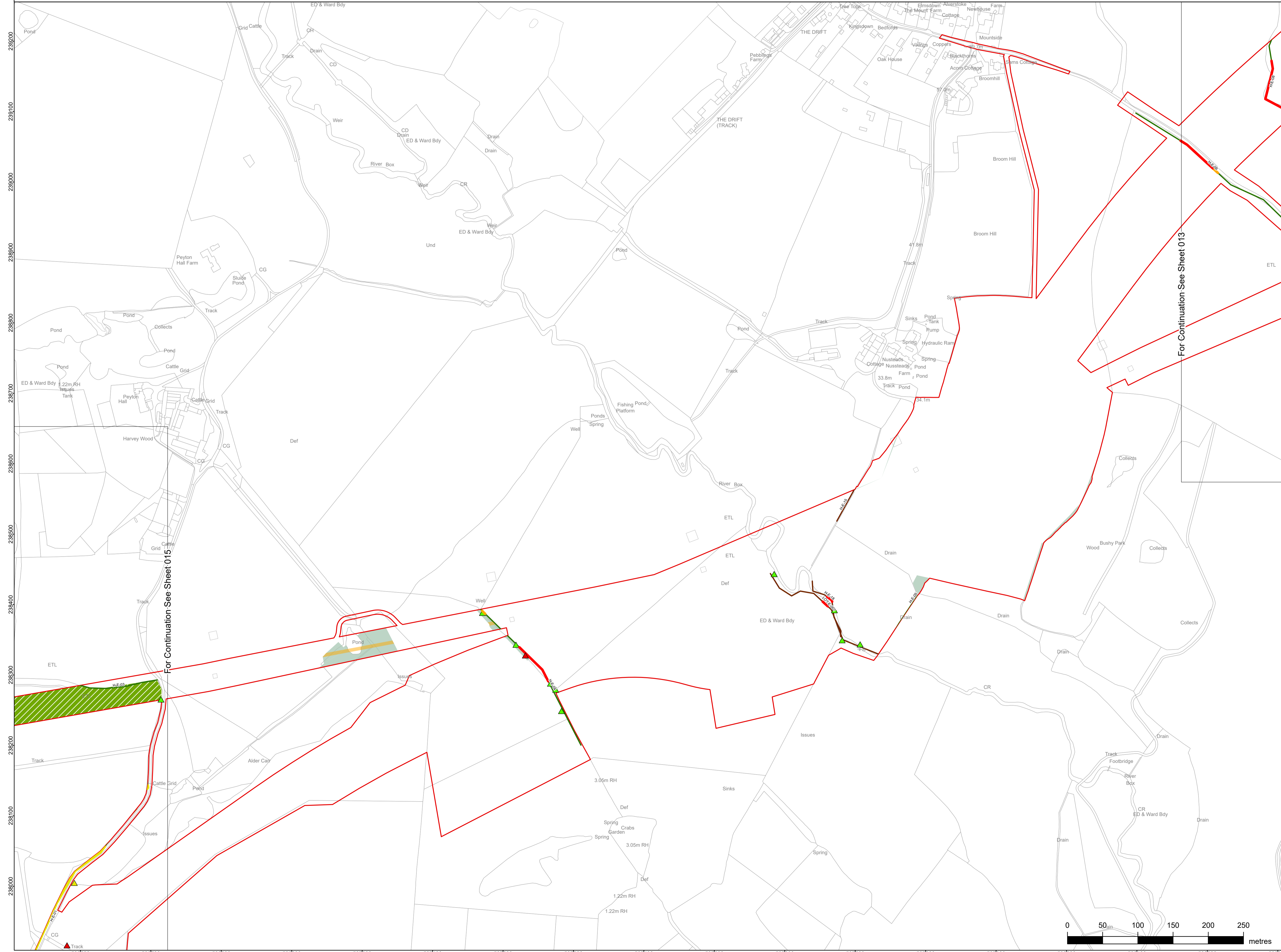
nationalgrid			
TITLE: Document 2.9 Trees and Hedgerows to be Removed or Managed Plans			
CIRCUIT / SITE: Bramford – Pelham & Bramford – Braitree – Bulls Lodge			GIS
ORIGINATOR DRAWING NO. A1_DF4_2.9_TreeAndHedgerowRemoval			
NG DRAWING No. BT-NG-020621-545-0012	SHEET NO. 12	NO. OF SHEETS 30	ISSUE: A
SCALE: 1:2,500			



NATIONAL GRID (BRAMFORD TO TWINSTEAD REINFORCEMENT) ORDER
 PINS APPLICATION NUMBER: EN020002
 TREES AND HEDGEROWS TO BE REMOVED OR MANAGED PLANS
 REGULATION 5(2)(e)
 SHEET 14 OF 30
 IN THE DISTRICT OF BABERGH DISTRICT COUNCIL



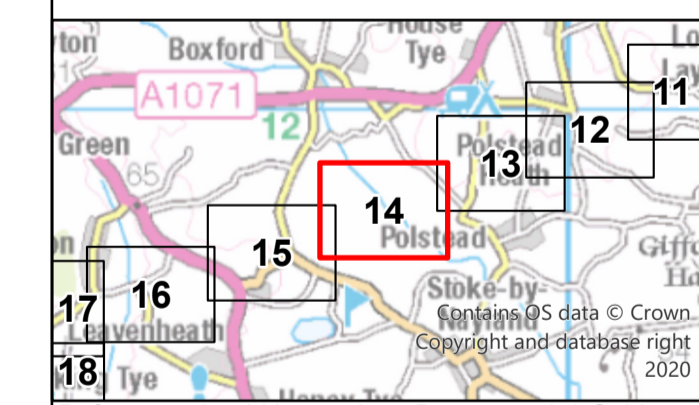
Reproduced from Ordnance Survey maps by permission of Ordnance Survey on behalf of the controller of His Majesty's Stationery Office. © Crown Copyright Ordnance Survey, Licence no. 010059731



- Order Limits
- Section boundaries
- Retained Vegetation**
- Veteran Tree
- Individual Tree Preservation Order
- Tree Preservation Order
- ▲ Tree
- Important hedgerow as per criteria in Hedgerow Regulations 1997
- Not important hedgerow as per criteria in Hedgerow Regulations 1997
- Line of trees
- Commercial orchards
- Potential ancient woodland
- Ancient woodland
- Retained woodland / group of trees
- Affected Vegetation**
- ▲ Tree pruning
- ▲ Tree coppicing
- ▲ Tree removal (including roots)
- Hedgerow / line of trees pruning
- Hedgerow / line of trees to be coppiced
- Hedgerow / line of trees removal (including roots)
- Woodland / group of trees to be pruned
- Woodland / group of trees to be coppiced
- Woodland / group of trees to be removed (including roots)
- Hedgerow / line of trees crossing schedule label

For Continuation See Sheet 015

For Continuation See Sheet 013



Reference should be made to Document 2.1 Guide to the Plans which provides further information on what the plans show.

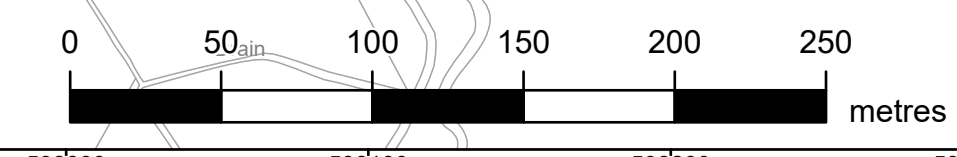
NG Investment No: 21847				
A	17/02/2023	Rev A for DCO application	JT	DD
ISSUE	DATE	REMARKS	DRAWN	CHKD

PROJECT: **Bramford to Twinstead Reinforcement**

nationalgrid

TITLE: Document 2.9
 Trees and Hedgerows to be Removed or Managed Plans

CIRCUIT / SITE: Bramford – Pelham & Bramford – Braitree – Bulls Lodge	GIS
ORIGINATOR DRAWING NO. A1_DF4_2.9_TreeAndHedgerowRemoval	A1
NG DRAWING No. BT-NG-020621-545-0012	ISSUE: A
SHEET NO. 14	NO. OF SHEETS 30
SCALE: 1:2,500	



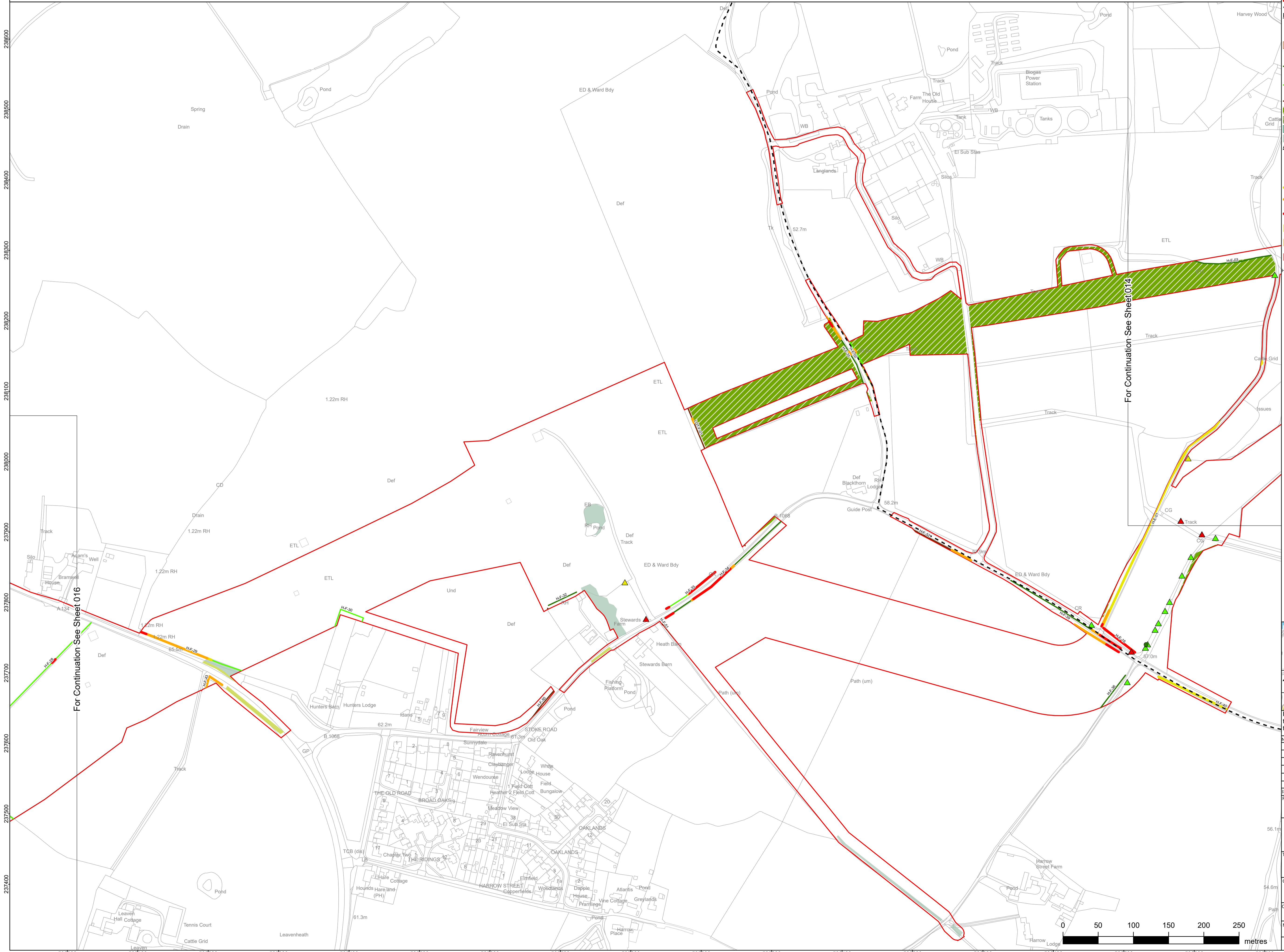
NATIONAL GRID (BRAMFORD TO TWINSTEAD REINFORCEMENT) ORDER
 PINS APPLICATION NUMBER: EN020002
 TREES AND HEDGEROWS TO BE REMOVED OR MANAGED PLANS
 REGULATION 5(2)(e)
 SHEET 15 OF 30
 IN THE DISTRICT OF BABERGH DISTRICT COUNCIL



Application Document 2.9

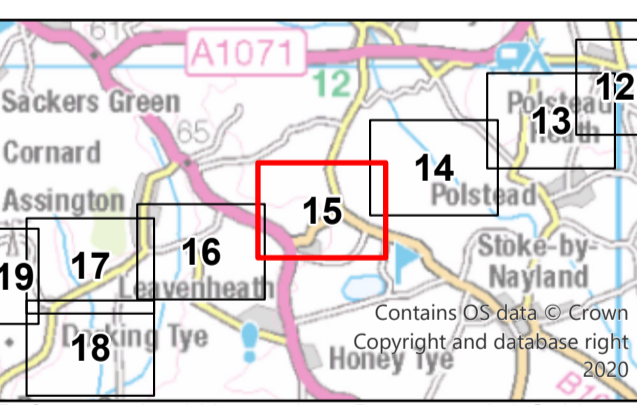
Reproduced from Ordnance Survey maps by permission of Ordnance Survey on behalf of the controller of His Majesty's Stationery Office. © Crown Copyright Ordnance Survey, Licence no. 010059731

- Order Limits
- Section boundaries
- Retained Vegetation**
 - Veteran Tree
 - Individual Tree Preservation Order
 - Tree Preservation Order
 - Tree
 - Important hedgerow as per criteria in Hedgerow Regulations 1997
 - Not important hedgerow as per criteria in Hedgerow Regulations 1997
 - Line of trees
 - Commercial orchards
 - Potential ancient woodland
 - Ancient woodland
 - Retained woodland / group of trees
- Affected Vegetation**
 - Tree pruning
 - Tree coppicing
 - Tree removal (including roots)
 - Hedgerow / line of trees pruning
 - Hedgerow / line of trees to be coppiced
 - Hedgerow / line of trees removal (including roots)
 - Woodland / group of trees to be pruned
 - Woodland / group of trees to be coppiced
 - Woodland / group of trees to be removed (including roots)
 - Hedgerow / line of trees crossing schedule label



For Continuation See Sheet 016

For Continuation See Sheet 014



Reference should be made to Document 2.1 Guide to the Plans which provides further information on what the plans show.

NG Investment No: 21847				

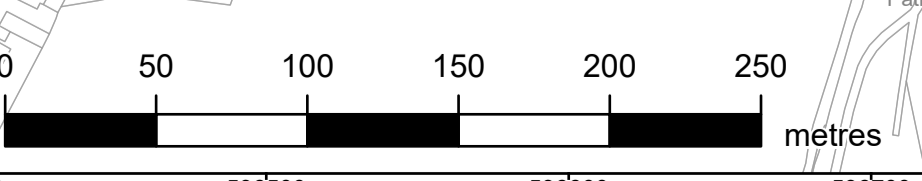
ISSUE	DATE	REMARKS	DRAWN	CHKD	APPD
A	17/02/2023	Rev A for DCO application	JT	DD	CW

PROJECT: **Bramford to Twinstead Reinforcement**

TITLE: **Document 2.9
Trees and Hedgerows to be Removed or Managed Plans**

CIRCUIT / SITE: **Bramford – Pelham & Bramford – Braintree – Bulls Lodge**

ORIGINATOR DRAWING NO.	A1
NG DRAWING No.	BT-NG-020621-545-0012
SHEET NO.	15
NO. OF SHEETS	30
ISSUE:	A

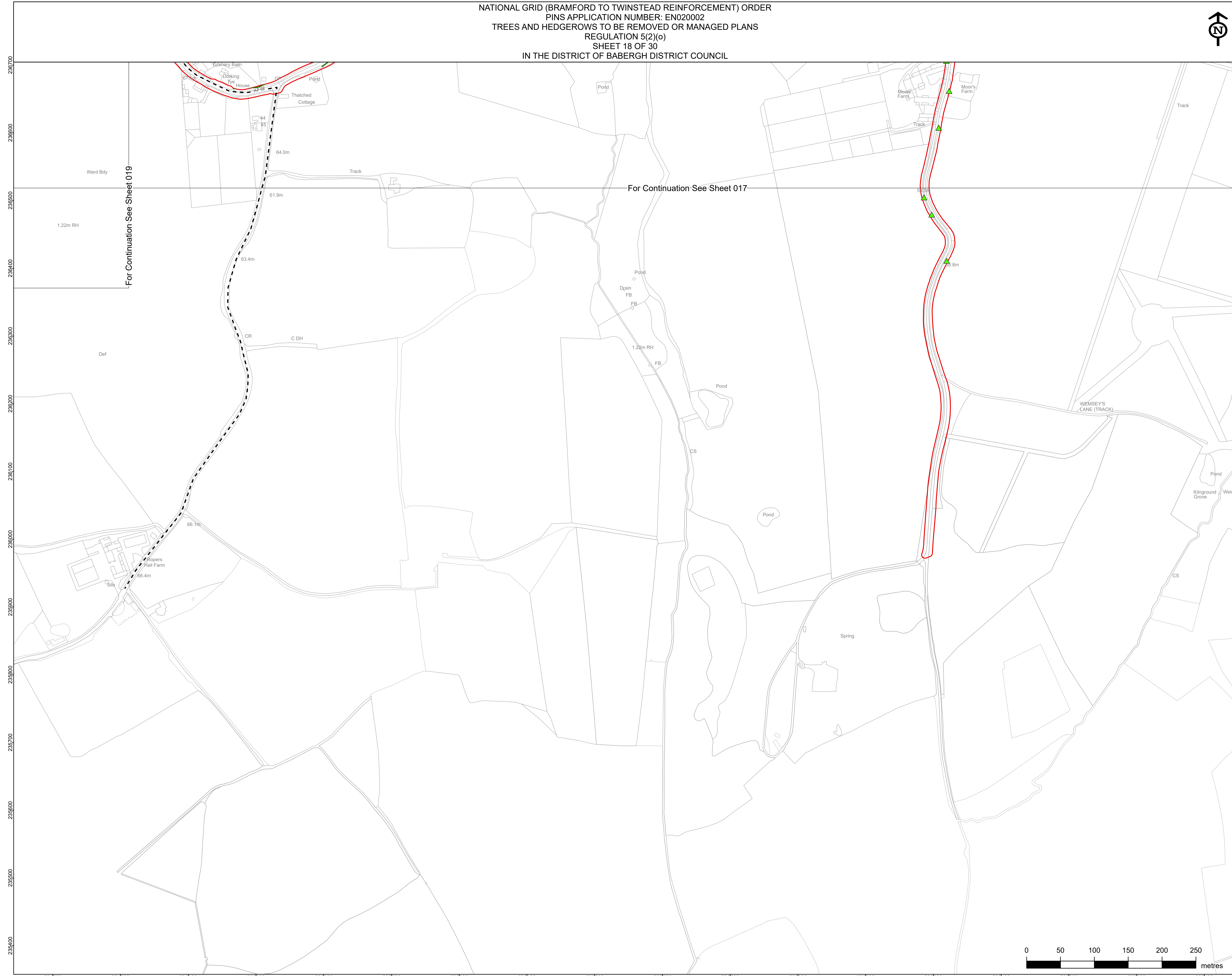


NATIONAL GRID (BRAMFORD TO TWINSTEAD REINFORCEMENT) ORDER
 PINS APPLICATION NUMBER: EN020002
 TREES AND HEDGEROWS TO BE REMOVED OR MANAGED PLANS
 REGULATION 5(2)(e)
 SHEET 18 OF 30
 IN THE DISTRICT OF BABERGH DISTRICT COUNCIL



Application Document 2.9

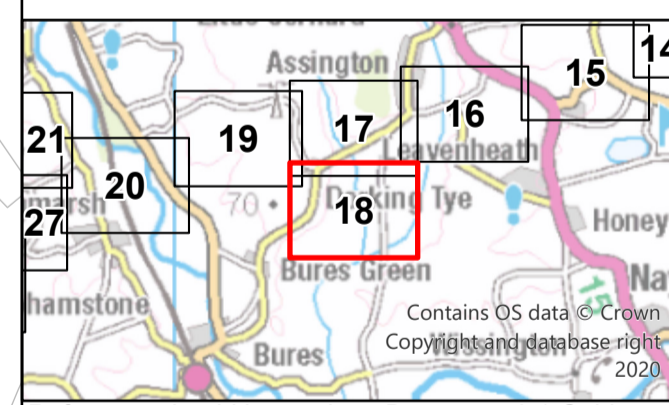
Reproduced from Ordnance Survey maps by permission of Ordnance Survey on behalf of the controller of His Majesty's Stationery Office. © Crown Copyright Ordnance Survey, Licence no. 0100059731



For Continuation See Sheet 019

For Continuation See Sheet 017

- Order Limits
- Section boundaries
- Retained Vegetation**
- Veteran Tree
- Individual Tree Preservation Order
- Tree Preservation Order
- ▲ Tree
- Important hedgerow as per criteria in Hedgerow Regulations 1997
- Not important hedgerow as per criteria in Hedgerow Regulations 1997
- Line of trees
- Commercial orchards
- Potential ancient woodland
- Ancient woodland
- Retained woodland / group of trees
- Affected Vegetation**
- ▲ Tree pruning
- ▲ Tree coppicing
- ▲ Tree removal (including roots)
- Hedgerow / line of trees pruning
- Hedgerow / line of trees to be coppiced
- Hedgerow / line of trees removal (including roots)
- Woodland / group of trees to be pruned
- Woodland / group of trees to be coppiced
- Woodland / group of trees to be removed (including roots)
- +xx-xx Hedgerow / line of trees crossing schedule label



Reference should be made to Document 2.1 Guide to the Plans which provides further information on what the plans show.

NG Investment No: 21847			

ISSUE	DATE	REMARKS	DRAWN	CHKD	APPD
A	17/02/2023	Rev A for DCO application	JT	DD	CW

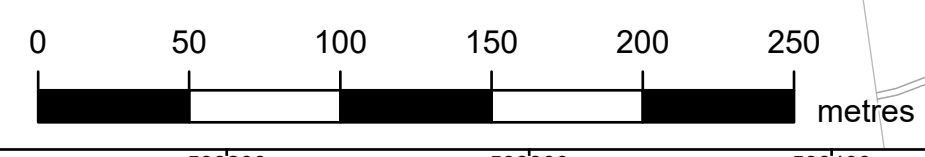
PROJECT: **Bramford to Twinstead Reinforcement**

nationalgrid

TITLE: Document 2.9
 Trees and Hedgerows to be Removed or Managed Plans

CIRCUIT / SITE: **Bramford – Pelham & Bramford – Braintree – Bulls Lodge** GIS

ORIGINATOR DRAWING NO. **A1**
 NG DRAWING No. **BT-NG-020621-545-0012** SHEET NO. **18** NO. OF SHEETS **30** ISSUE: **A**
 SCALE: 1:2,500

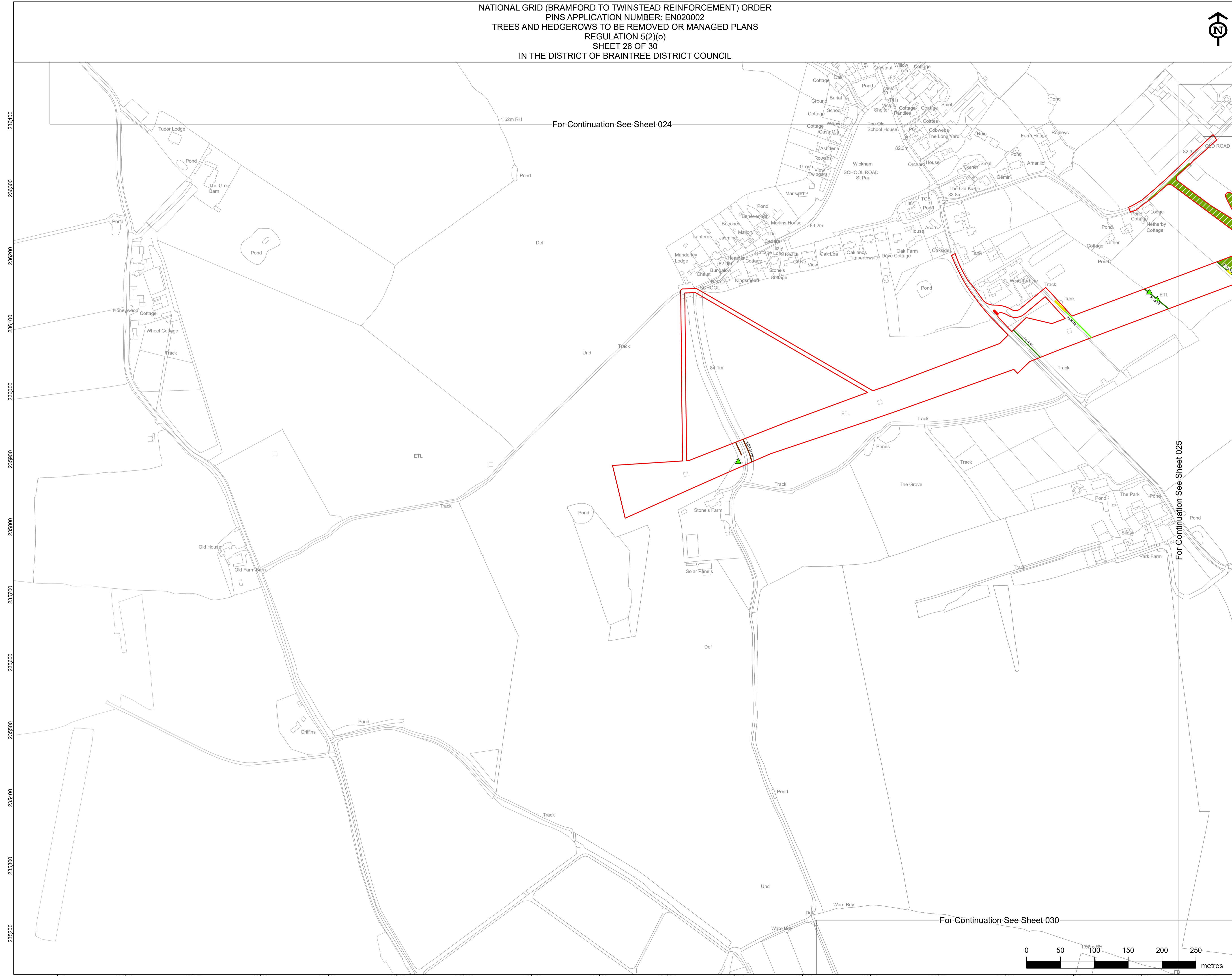


NATIONAL GRID (BRAMFORD TO TWINSTEAD REINFORCEMENT) ORDER
 PINS APPLICATION NUMBER: EN020002
 TREES AND HEDGEROWS TO BE REMOVED OR MANAGED PLANS
 REGULATION 5(2)(e)
 SHEET 26 OF 30
 IN THE DISTRICT OF BRAINTREE DISTRICT COUNCIL

Application Document 2.9

Reproduced from Ordnance Survey maps by permission of Ordnance Survey on behalf of the controller of His Majesty's Stationery Office. © Crown Copyright Ordnance Survey, Licence no. 010059731

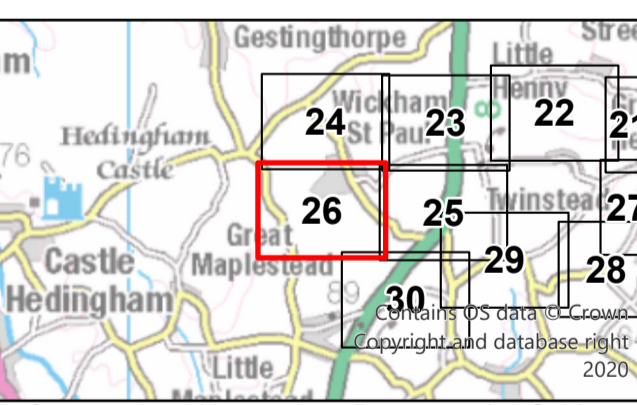
- Order Limits
- Section boundaries
- Retained Vegetation**
- Veteran Tree
- Individual Tree Preservation Order
- Tree Preservation Order
- ▲ Tree
- Important hedgerow as per criteria in Hedgerow Regulations 1997
- Not important hedgerow as per criteria in Hedgerow Regulations 1997
- Line of trees
- Commercial orchards
- Potential ancient woodland
- Ancient woodland
- Retained woodland / group of trees
- Affected Vegetation**
- ▲ Tree pruning
- ▲ Tree coppicing
- ▲ Tree removal (including roots)
- Hedgerow / line of trees pruning
- Hedgerow / line of trees to be coppiced
- Hedgerow / line of trees removal (including roots)
- Woodland / group of trees to be pruned
- Woodland / group of trees to be coppiced
- Woodland / group of trees to be removed (including roots)
- Hedgerow / line of trees crossing schedule label



For Continuation See Sheet 024

For Continuation See Sheet 025

For Continuation See Sheet 030



Reference should be made to Document 2.1 Guide to the Plans which provides further information on what the plans show.

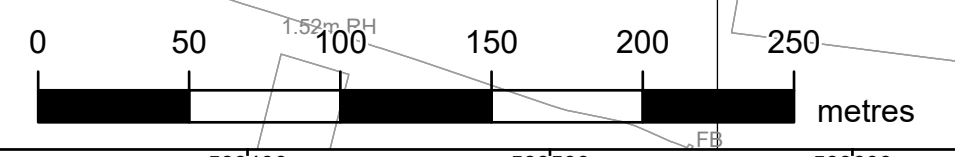
NG Investment No: 21847			
A	17/02/2023	Rev A for DCO application	JT DD CW
ISSUE	DATE	REMARKS	DRAWN/CHKD/APPD

PROJECT: **Bramford to Twinstead Reinforcement**

nationalgrid

TITLE: Document 2.9
 Trees and Hedgerows to be Removed or Managed Plans

CIRCUIT / SITE: Bramford – Pelham & Bramford – Braintree – Bulls Lodge	GIS
ORIGINATOR DRAWING NO. A1_DF4_2.9_TreeAndHedgerowRemoval	A1
NG DRAWING No. BT-NG-020621-545-0012	SHEET NO. 26
SCALE: 1:2,500	NO. OF SHEETS 30
	A



National Grid plc
National Grid House,
Warwick Technology Park,
Gallows Hill, Warwick.
CV34 6DA United Kingdom

Registered in England and Wales
No. 4031152

